

<b>REPUBLIC OF MAURITIUS</b> <b>DEPARTMENT OF CIVIL AVIATION</b> Aeronautical Information Service Sir Seewoosagur Ramgoolam International Airport Plaine Magnien	
<b>TEL</b> : (230) 603 2000 <b>FAX</b> : (230) 637 3164 <b>AFS</b> : FIMPYNYX <b>E-mail</b> : civil-aviation@govmu.org	<b>AIP Supplement</b> <b>S001/ 25</b> 28 January 2025

## Establishment of a Temporary Restricted Area within Mauritius Control Area 1 (CTA 1)

### 1 INTRODUCTION

The temporary restricted area within the Mauritius Control Area 1 for the setting up of an energy plant at Olivia for the production of electricity using wind power by means of a Kite, has been extended up to **31 July 2025**.

This AIP Supplement replaces AIP Supplement S001/23 dated 03 April 2023.

### 2 TEMPORARY RESTRICTED AREA (OLIVIA)

#### 2.1 *Lateral Limits*

Circle with a radius of 0.54 NM (1000m) centred on S 20°17'29" - E 057°43'38" located at Olivia.

#### 2.2 *Vertical Limits*

Ground – 2500 ft AGL.

#### 2.3 *Date and Times of Activity*

The kite is operating on a 24 hours basis up to 31 July 2025 at 2359 UTC except during cyclone or bad weather conditions.

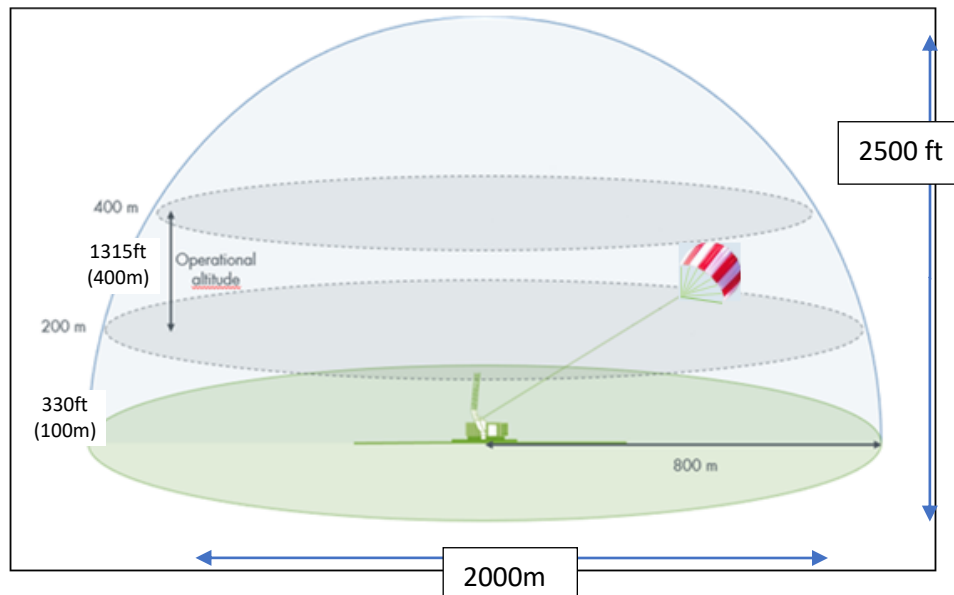
Information on current status of the temporary Restricted Area will be available on ATIS on 126.2 MHz.

### 3. KITE FEATURES

The kite has a surface area of 120m<sup>2</sup> and will operate at a height between 100 and 400m. It is tethered by a rope of 800m long.

### 3.1 Safety measures

The kite has bright red and white stripes to make it visible from long distances. It is equipped with two high intensity flashing lights to make it visible at night.



**Temporary Restricted Area (Olivia)**

## 4 TYPE OF FLIGHT RESTRICTIONS

All flights are restricted in the above-mentioned area.

Helicopters and other VFR users shall hence stay clear of this temporary restricted area.

Police helicopters on search, rescue and disaster or special missions must inform Mauritius control Tower at least 10 minutes prior entering the area to allow time for the kite to be lowered. The Police Helicopter may enter the Temporary Restricted Area after confirmation from Mauritius Control Tower that the Kite has been lowered and stored.

Following implementation of RNP1 SIDs and STARs, Skysails will have to lower the kite especially when aircraft departing RWY 32 makes an immediate right turn. At start up of aircraft, ATC will inform Skysail to lower the kite and will inform Skysail continue its activity once aircraft has passed 2500ft.

Requests can be made via radiotelephony or by phone.

## 5 EFFECTIVE DATE

This AIP Supplement will be effective up to 31 July 2025 at 2359 UTC.

**D. POTHUNNAH**  
for Director of Civil Aviation

## TEMPORARY RESTRICTED AREA

